

tipco»

Retainers

tipco»

For 5/16" Socket
Head Screws

B

A

C

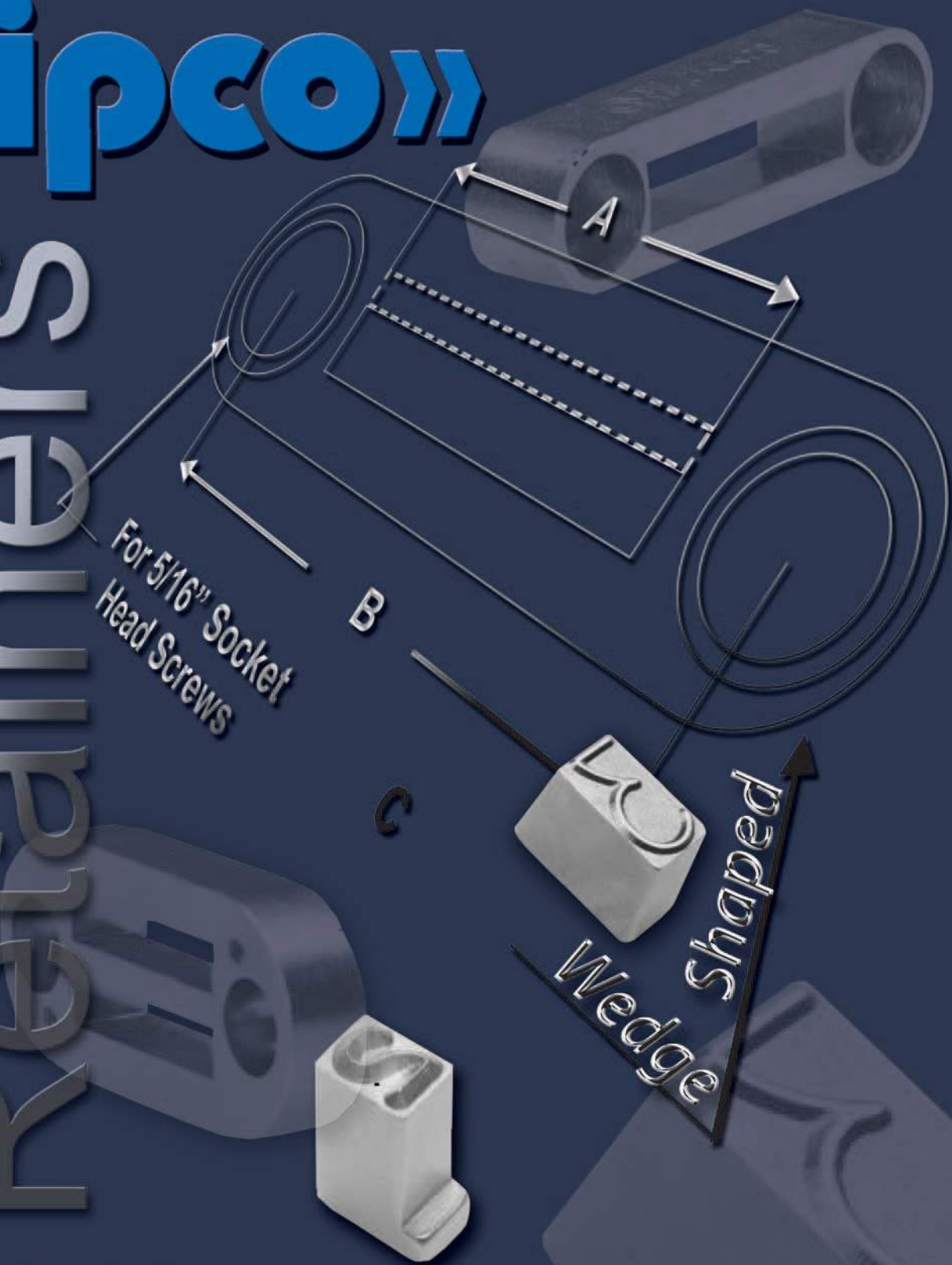
Wedge
Shaped

L-Shaped Type

Bottoming Marker

1-800-268-0115

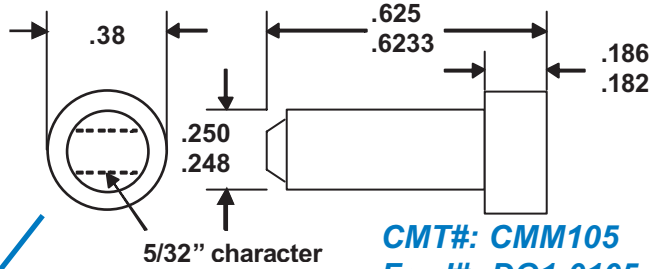
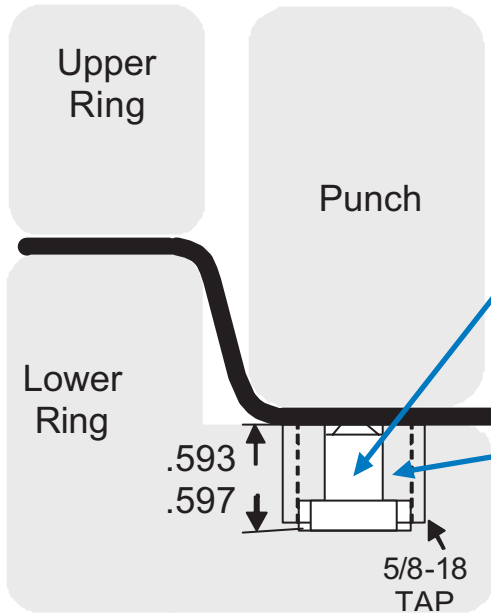
www.tipcopunch.com



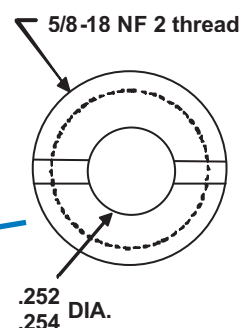


Bottoming Marker

Typical installation of CMM104 and CMM105 bottoming marker. For use in stamping presses.

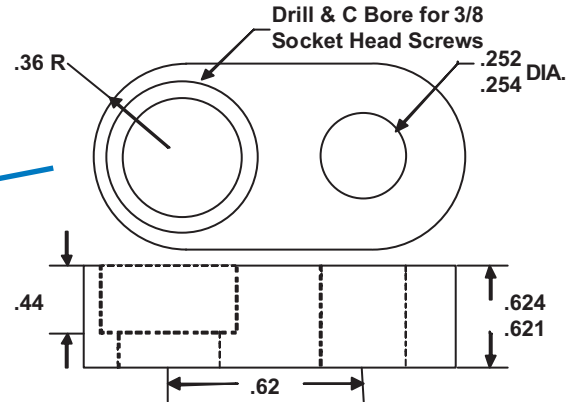
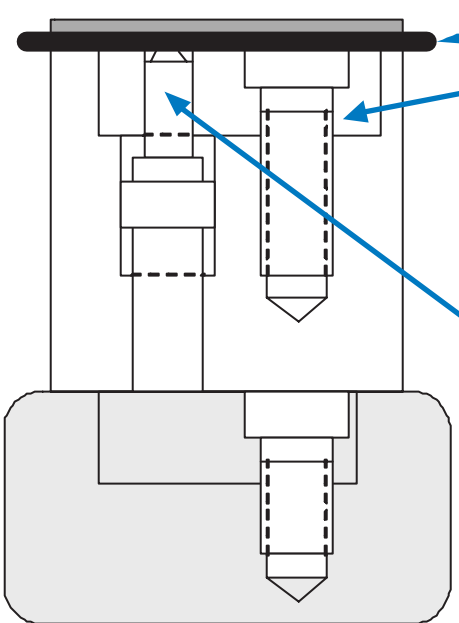


CMT#: CMM105
Ford#: DG1-0105
DCX#: 21-460-0079

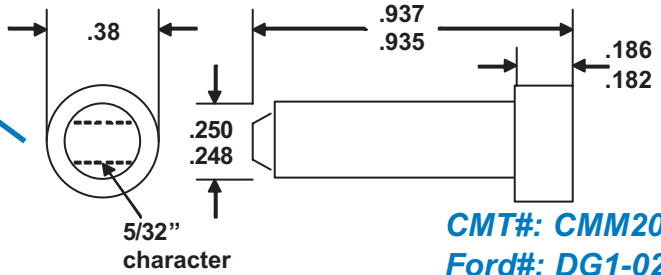


CMT#: CMM104
Ford#: DG1-0104
DCX#: 21-912-0005

Typical installation of CMM201 and CMM202 bottoming marker. For use with forming dies having spring or air pads.



CMT#: CMM201
Ford#: DG1-0201



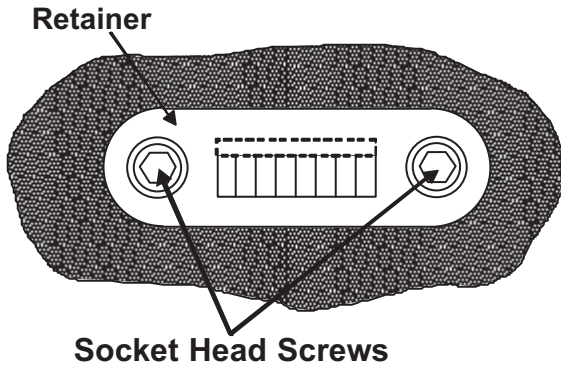
CMT#: CMM202
Ford#: DG1-0202

visit www.tipcopunch.com

TIPCO, INC.
 1 Coventry Road
 Brampton, Ontario L6T4B1

TEL: 800-268-0115
 FAX: 905-791-4917

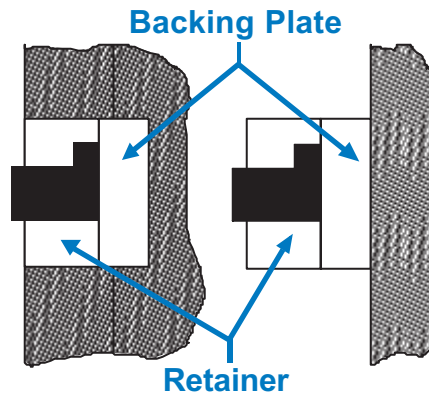
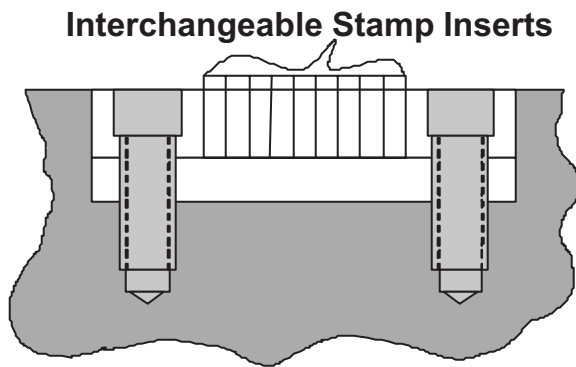
tipco» Installation



Formula For Determining Gap Width, Type Size, or Type Quantity:

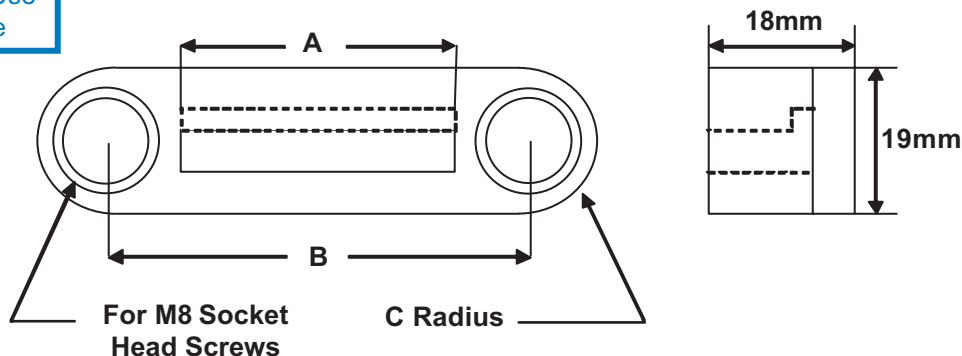
Gap Width of Retainers (represented by "A" in dwgs.)
 \div Type Width***
 =Quantity of Type Retainer Can Hold

Please note that type width is determined by desired character size



The retainer and backing plate set can be placed in a pocket or on a flat surface.

Metric Retainers For Use With L-Shaped Type



Retainer	A	B	C	Type Style (holder capacity)
CMMRN18R1900	40mm	60mm	9.5mm	CMM018 (10)
CMMRN18R7810	48mm	68mm	9.5mm	CMM018 (12)

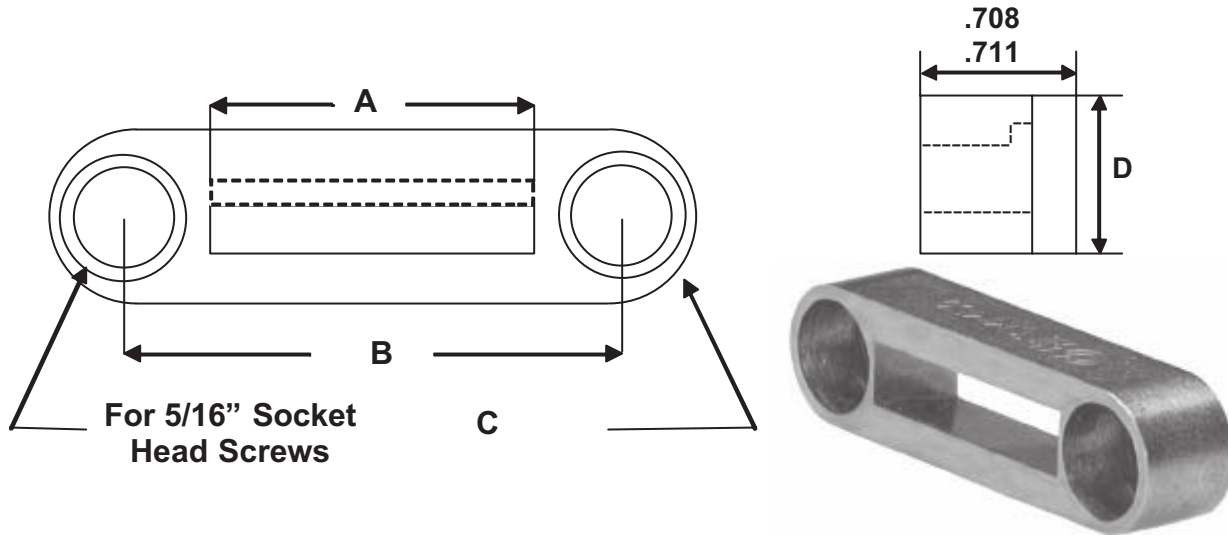
TIPCO, INC.

TOLL-FREE: 1-800-268-0115

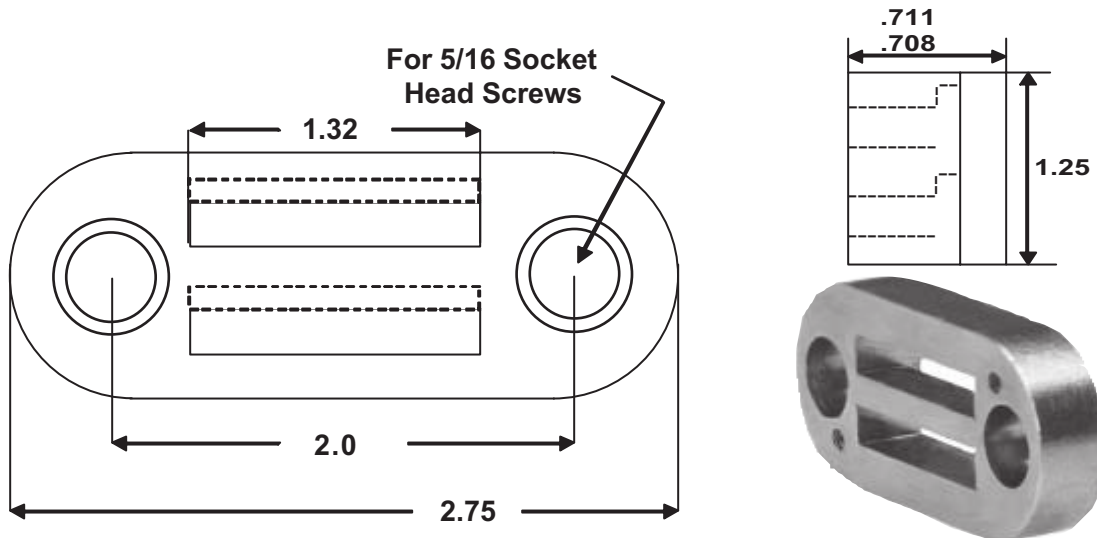
E-MAIL: sales@tipcoinc.com



Retainers for L-Shaped Type



Retainer	A	B	C	D	Type Style (holder capacity)
CMM101	1.31"	2.00"	.31"	.62"	CMM103 (7), CMM164 (8), CMM512 (8), CMM518 (8)
CMM510	1.64"	2.31"	.31"	.62"	CMM164 (10), CMM512 (10), CMM518 (10)
CMM412	2.25"	2.94"	.38"	.75"	CMM103 (12), CMM125 (18)
CMMRN18	1.10"	2.00"	.38"	.75"	CMM018 (7)



CMM106/CMM107 (retainer & backing plate set)
holds (8) in each row of CMM512, CMM164, CMM518, and (7) in each row of CMM103

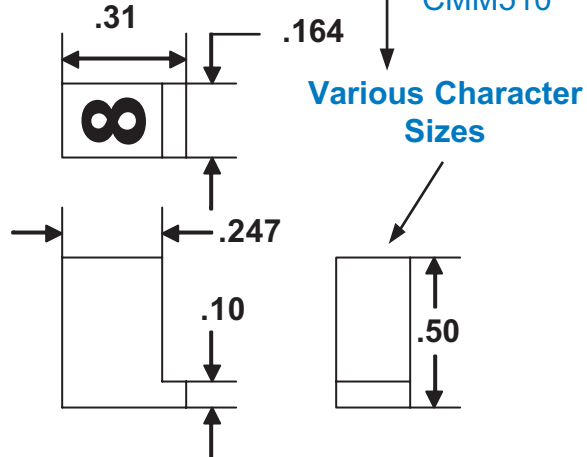


L-Shaped Type

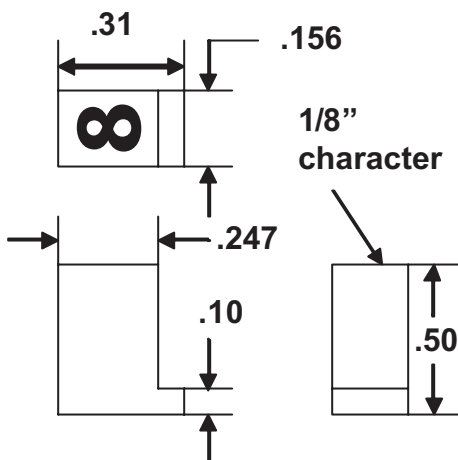


CMM518-3/16" character
CMM164-5/32" character
CMM512-1/8" character

Fits retainers
 CMM101,
 CMM106,
 CMM510



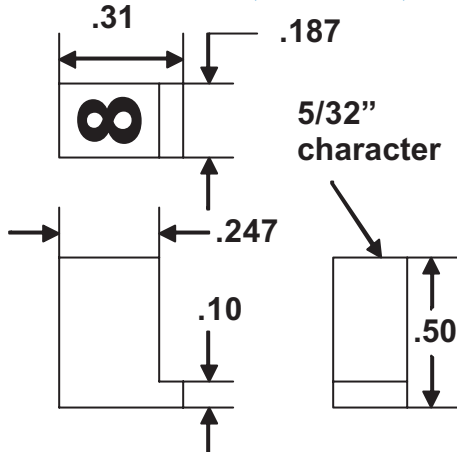
CMM018 -1/8" character
 Fits retainers CMMRN18,
 CMMRN18R1900, CMMRN18R7810



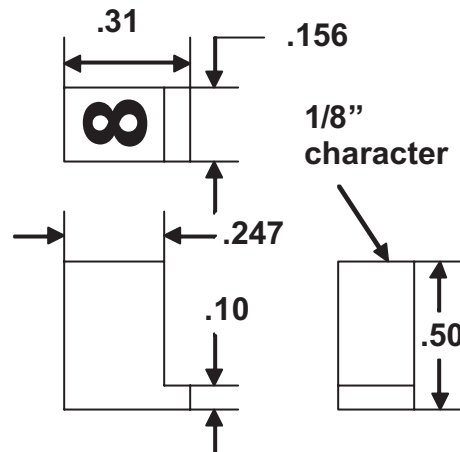
MULTI-CHARACTER SEGMENT DIES AVAILABLE

Tipco can manufacture any configuration of multi-character stamps for quick and easy change over of part numbers, or codes.

CMM103 -5/32" character
 Fits retainers CMM101, CMM412, CMM106

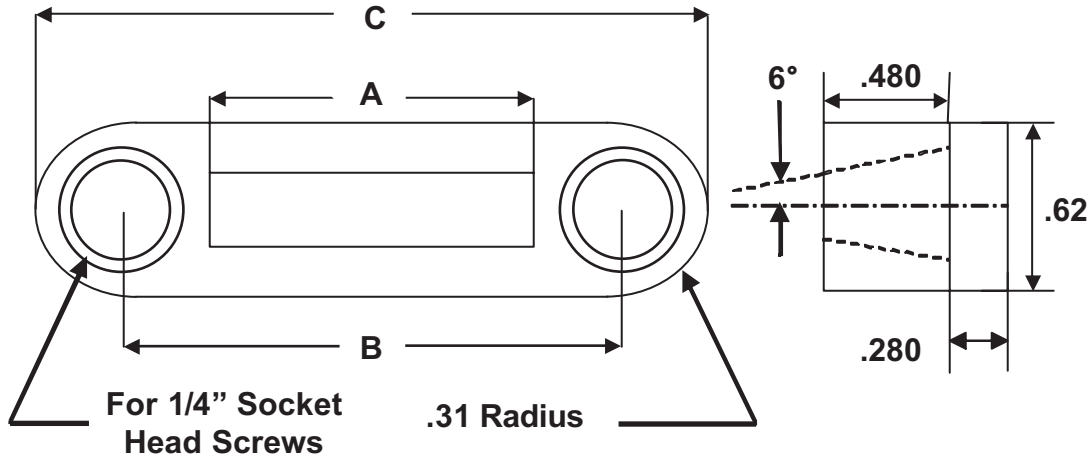


CMM125 -1/8" character
 Fits retainers CMM412

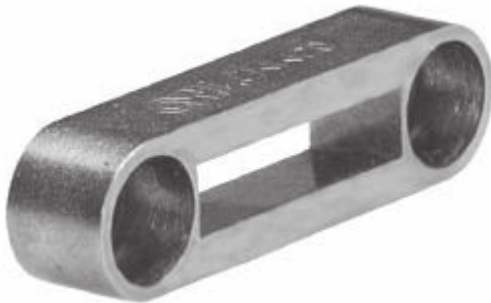




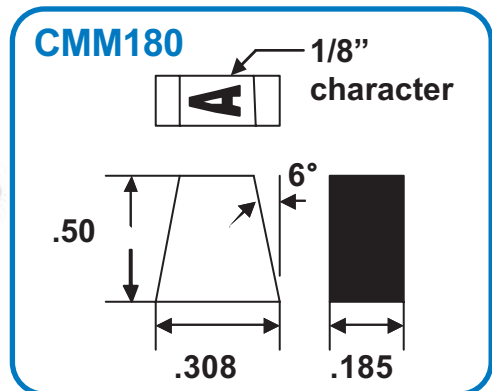
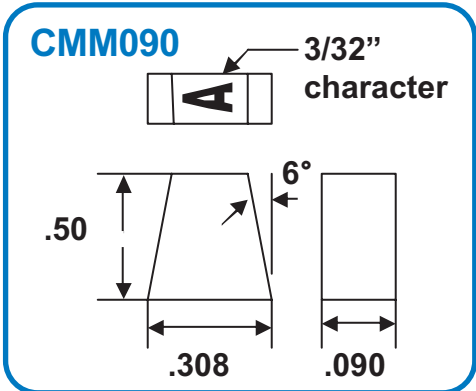
Retainers for Wedge Shaped Type



Retainer	A	B	C	Type Style (holder capacity)
CMM3	.562"	1.00"	1.5"	CMM180 (3), CMM090 (6)
CMM5	.936"	1.38"	1.88"	CMM180 (5), CMM090 (10)
CMM7	1.310"	1.75"	2.25"	CMM180 (7), CMM090 (14)
CMM9	1.683"	2.25"	2.75"	CMM180 (9), CMM090 (18)

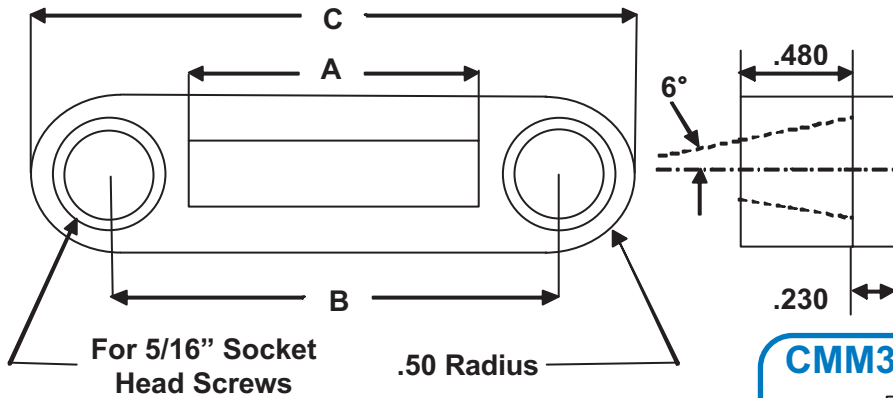


From A,B,C To Your Logo, Tipco Can Engrave Any Marking Legend Onto Custom Die Segments For Use In A Stamping Press Or Retainer System.

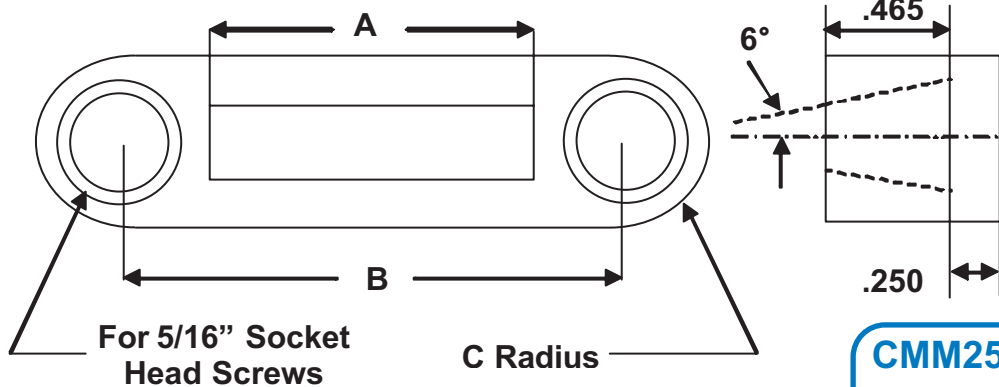
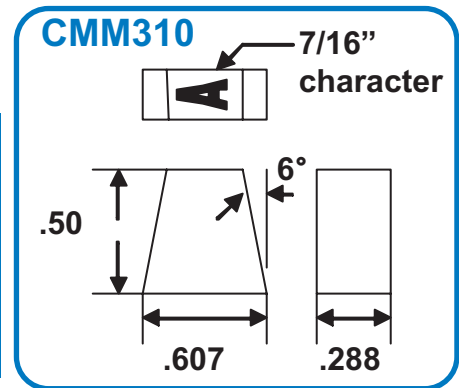




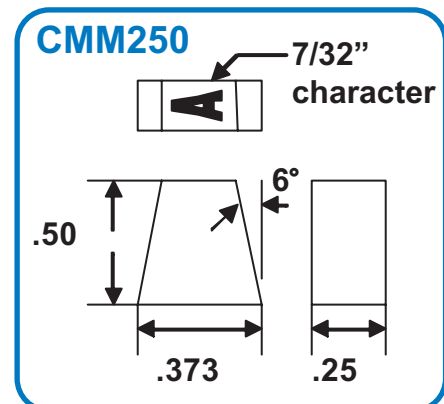
Retainers for Wedge Shaped Type



Retainer	A	B	C	Type Style (holder capacity)
CMM301	1.44"	2.00"	2.94"	CMM310 (5)
CMM306	1.73"	2.50"	3.25"	CMM310 (6)
CMM308	2.31"	3.06"	3.81"	CMM310 (8)



Retainer	A	B	C	Type Style (holder capacity)
CMM50	1.25"	1.81"	.31"	CMM250 (5)
CMM54	2.265"	2.88"	.38"	CMM250 (9)



**TIPCO INC.**

1 Coventry Road
Brampton, Ontario
L6T 4B1
Canada

Tel. (905) 791-9811
Fax: (905) 791-4917
1-800-268-0115
E-mail: sales@tipcoinc.com

TIPCO INC.

9080 Boul. Du Golf
Anjou, Quebec
H1J 3A1
Canada

Tel. (514) 727-2811
Fax: (514) 727-1222
1-800-363-7008
E-mail: mtlsales@tipcoinc.com

**TIPCO PUNCH INC.**

4357 Park Drive
Suite "H"
Norcross, Georgia
30093
USA

Tel. (770) 564-0032
Fax: (770) 564-3726
1-800-544-8444
E-mail: sales@tipcopunch.com

TIPCO PUNCH INC.

6 Rowe Court
Hamilton, Ohio
45015
USA

Tel. (513) 874-9140
Fax: (513) 874-0204
1-800-544-8444
E-mail: sales@tipcopunch.com

**TIPCO de MEXICO
S.A. de C.V.**

Acc. V1, No. 8
Fraccionamiento Industrial
Benito Juarez
Queretaro, Qro., 76120
Mexico

Tel.: +52 44 2210 5041
+52 44 2210 5042
Fax: +52 44 2210 5043
E-mail: tipcomx.com

**TIPCO CIMA srl**

Via De Amicis 75
20040 Colnago (MI)
Italy

Tel: +39 (039) 688-5315
Fax: +39 (039) 609-5779
E-mail: tipcocimasrl@libero.it

**TIPCO UK**

Unit 20, Maybrook
Industrial Estate
Brownhills, Nr Walsall
WS8 7DG,
United Kingdom

Tel: 01543 452220
Fax: 01543 360427
E-mail: sales@clewbro.co.uk